



**Chalkie White**  
083 650 5972  
chalkie@dalmax.co.za



**Tommy Pullen**  
084 720 4645  
tommy@dalmax.co.za

Contact Dalmax

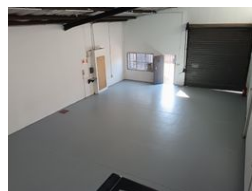
031 764 1525

Office 2 Bronzite Block  
Abrey Eco Park  
5 Abrey Road  
Kloof  
3610

186m<sup>2</sup> Warehouse To Let in Pinetown Central



Web Ref CL4941



R75 per m<sup>2</sup>

Gross Monthly Rental R14,000 Excl. VAT

 0  0

### Newly renovated Secure mini factories to lease in Pinetown

Newly renovated Mini factories ranging from 186sqm to 245sqm available for lease in a secure industrial park. This opportunity offers a range of features that will meet your business requirements.

The mini factory is located within a secure industrial park, offering a clear span working area spanning 186sqm, providing ample space for various industrial activities, whether it's manufacturing, assembly, or storage.

Above the offices and ablutions, there is a concrete mezzanine, offering additional storage space or the potential for expansion. The mini factory includes two offices on the lower level, alternatively, one office and a change room can be accommodated. There are two sets of ablution facilities available.

The industrial park provides easy access for smaller type vehicles.

### Features

**Zoning** Industrial

#### Interior

Air Conditioning	Yes
Power 3 Phase	Yes
Power Amps	100

#### Exterior

Security	Yes
----------	-----

#### Sizes

Floor Size	186m <sup>2</sup>
Building Height	6m